



Double Scissor lift

Item No.: TWS3-19E / TWS3-19E-G

kg 3000 kg **↑** 1,85 m **⚡** 230 V or 400 V **⚙️** Autom.

Choice of colour:



RAL 5015 TWS3-19E or RAL 7016 TWS3-19E-G



Electromagnetic safety release

Description

On floor scissor lift. Due to its ultra-flat profile, you are able to lift very low sports cars. Double cylinders and a rocker arm system provide powerful lifting capabilities.

Features

- 1A Quality built with CE-Certificate
- Manufactured in accordance to ISO 9001
- Acoustic Warning signal (foot protection)
- IR-System (Light beam constantly ensures both platforms remain synchronised)
- Electromagnetic safety release
- Hydraulic synchronisation
- Automatic safety-lock-release system
- No restricting crossbar
- Rocker arm system
- High quality solid construction
- Emergency lowering valve
- Ultra low profil
- Comfortable and easy-to-use control panel

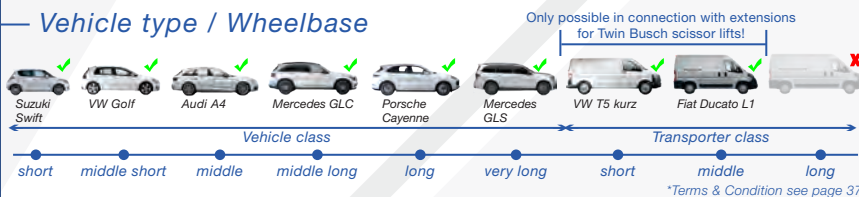
Delivery contents

- Lift incl. Power unit
- Rubber blocks (40 mm)
- Heavy duty anchor bolts (8 pcs.)
- English instruction manual
- Examination book and CE-Certificate
- Product video online

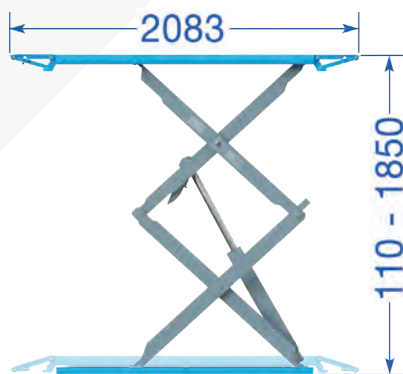
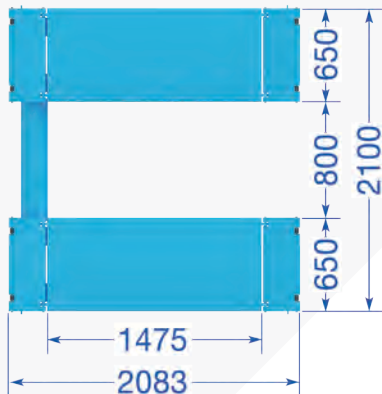
Videos



Vehicle type / Wheelbase



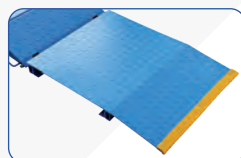
Dimensions



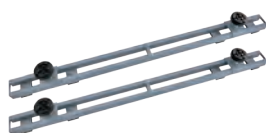
Technical Data

Lifting capacity	3000 kg
Lifting height max.	1850 mm + Rubber
Drive on height	110 mm
Lifting, lowering time (approx.)	45/30 sec.
Power supply	400 V / 230 V
Motor power	2,2 kW
Fusing	16 A / type C
Weight (approx.)	960 kg

Optional accessory



Drive on ramps
Item No.: TWS3-19-R
4 pcs. in the set



Cross beam for TWIN BUSCH scissor lifts
Item No.: TWS3-Q
2 pcs. in the set



Extension for TWIN BUSCH scissor lifts
Item no.: TWS3-V
2 pcs. in the set

Further accessories can be found at www.twinbusch.co.uk

Further information to be found at www.twinbusch.co.uk